



# Registro Tumori ASL Lecce

## I Tumori della Vescica Dati di incidenza e Mortalità

# I 10 tumori più frequenti. Maschi

PROVINCIA DI LECCE			
#	Sede	N	%
1	Polmone	2755	19.8%
2	Prostata	2230	16.0%
<b>3</b>	<b>Vescica</b>	<b>1983</b>	<b>14.2%</b>
4	Colon-retto	1598	11.5%
5	Fegato	601	4.3%
6	Stomaco	496	3.6%
7	Linfoma NH	398	2.9%
8	Rene	385	2.8%
9	Pancreas	325	2.3%
10	Laringe	285	2.0%

POOL AIRTUM		
#	Sede	%
1	Prostata	19.8%
2	Polmone	15.3%
3	Colon-retto	13.9%
<b>4</b>	<b>Vescica</b>	<b>10.6%</b>
5	Stomaco	4.6%
6	Fegato	4.3%
7	Rene	3.8%
8	Linfoma NH	3.4%
9	Pancreas	2.7%
10	Melanoma	2.3%

*RtLe Anni 2003-2008*

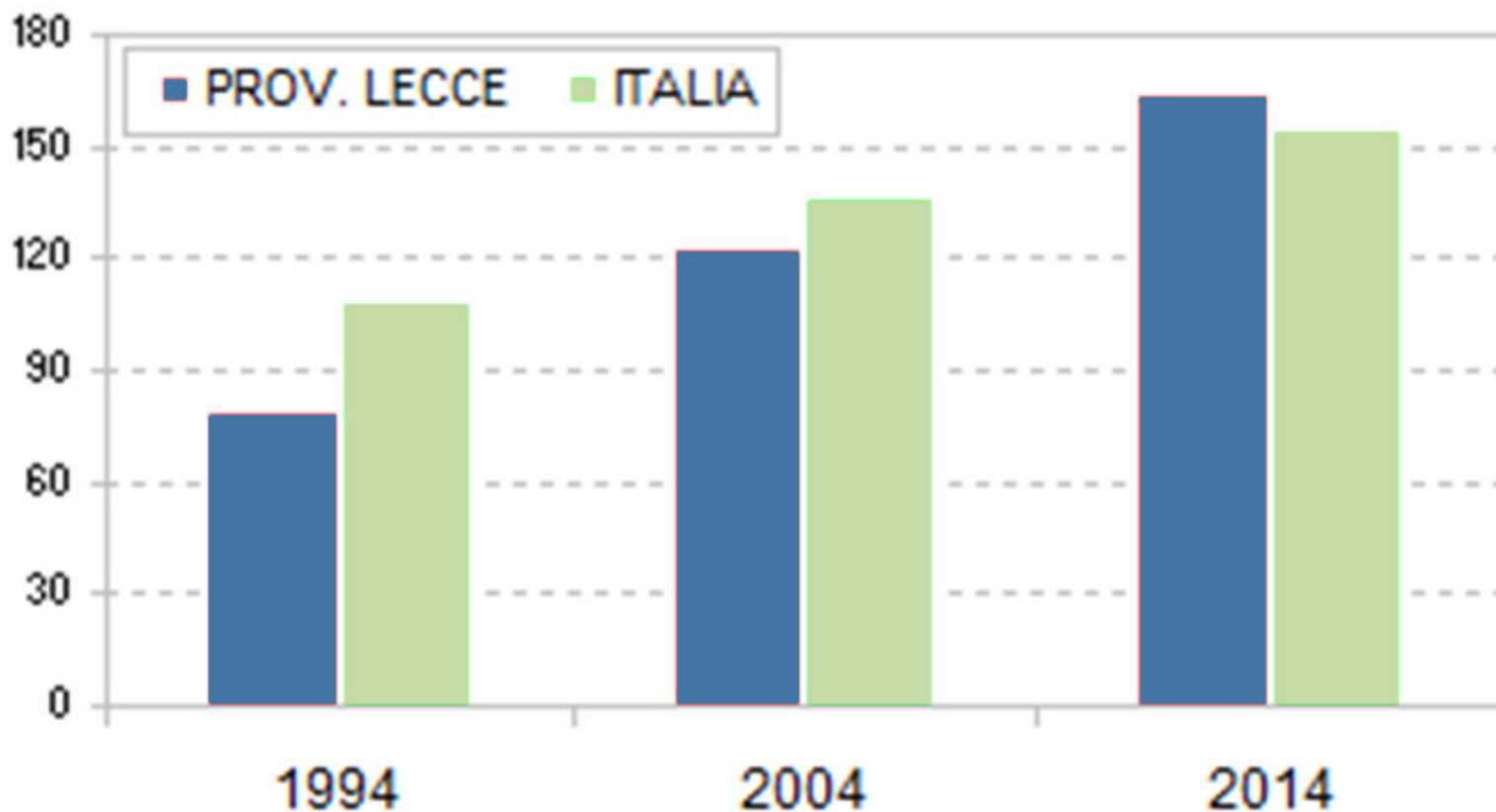
# I 10 tumori più frequenti. Femmine

PROVINCIA DI LECCE			
#	Sede	N	%
1	Mammella	3033	28.0%
2	Colon-retto	1463	13.5%
3	Tiroide	623	5.8%
4	Utero, corpo	594	5.5%
5	Polmone	460	4.2%
6	Ovaio	446	4.1%
<b>7</b>	<b>Vescica</b>	<b>363</b>	<b>3.4%</b>
8	Linfoma NH	360	3.3%
9	Stomaco	340	3.1%
10	Pancreas	313	2.9%

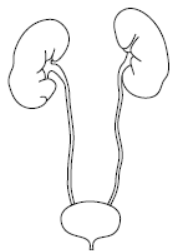
POOL AIRTUM		
#	Sede	%
1	Mammella	29.3%
2	Colon-retto	13.5%
3	Polmone	6.0%
4	Utero, corpo	4.8%
5	Tiroide	4.7%
6	Stomaco	3.9%
7	Linfoma NH	3.6%
8	Pancreas	3.6%
9	Ovaio	3.2%
<b>10</b>	<b>Vescica</b>	<b>3.0%</b>

*RtLe Anni 2003-2008*

# Indice di vecchiaia in Prov. di Lecce



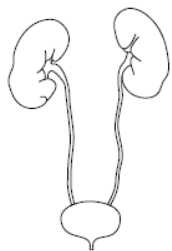
*Fonte dati: ISTAT*



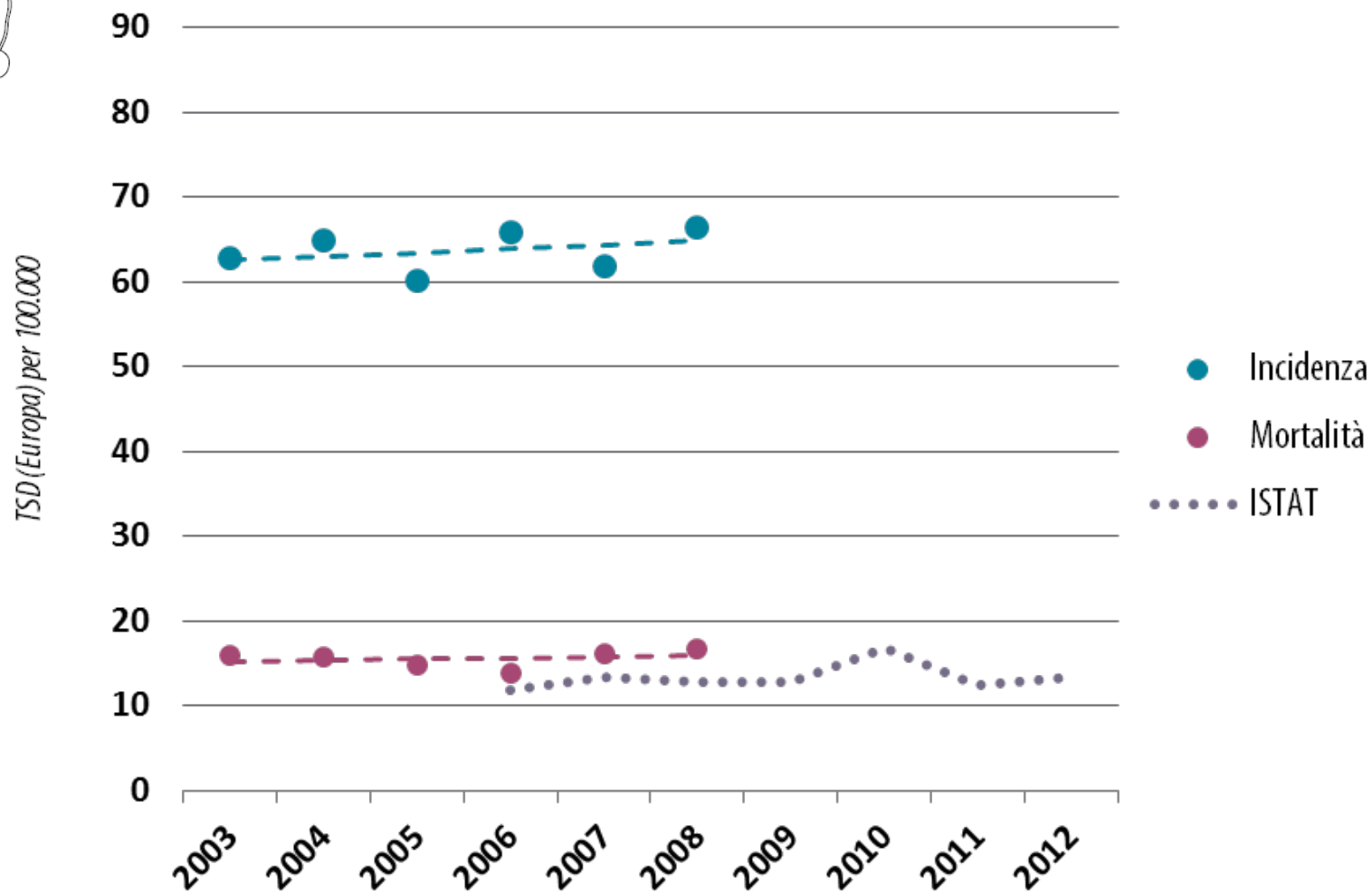
# SINTESI DEI DATI

	INCIDENZA			MORTALITA'		
	M	F	M+F	M	F	M+F
<b>Numero casi 2003-2008</b>	<b>1983</b>	<b>363</b>	<b>2346</b>	<b>529</b>	<b>108</b>	<b>637</b>
<b>Media annua</b>	331	61	391	88	18	106
% sul totale tumori	14.5	3.4	9.6	7	2.2	5.1
<b>Tasso grezzo</b> <i>(per 100.000 abitanti)</i>	87.4	14.6	49.3	23.3	4.3	13.4
<b>Tasso standardizzato</b> <i>Popolazione standard Europea (per 100.000 abitanti)</i>	<b>63.7</b>	<b>8.4</b>	<b>32.4</b>	<b>15.5</b>	<b>2</b>	<b>7.3</b>
<b>Rischio cumulativo</b> <i>(in percentuale, tra 0 e 74 anni)</i>	4.9	0.6	2.6	0.7	0.1	0.4
<b>Età media</b>	70.3	72.7	70.7	73	79.3	75.8

*RtLe Anni 2003-2008*

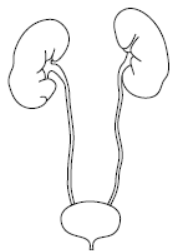


# Trend del tasso std. Maschi

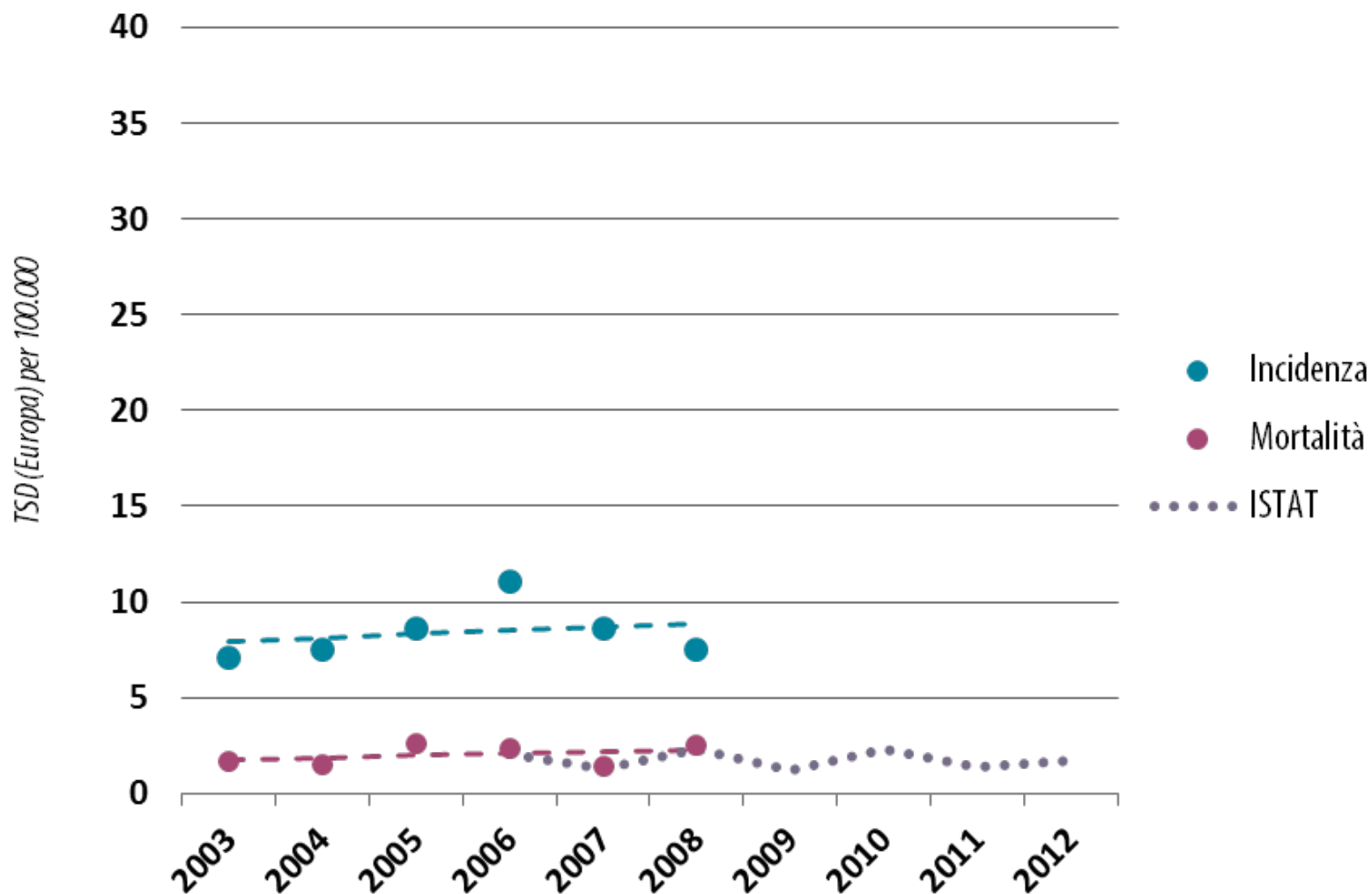


*Incidenza: +0.7% medio anno - Mortalità: +1,0% medio anno*

*RtLe Anni 2003-2008*

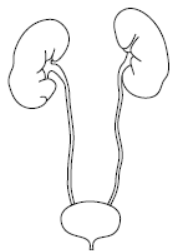


# Trend del tasso std. Femmine

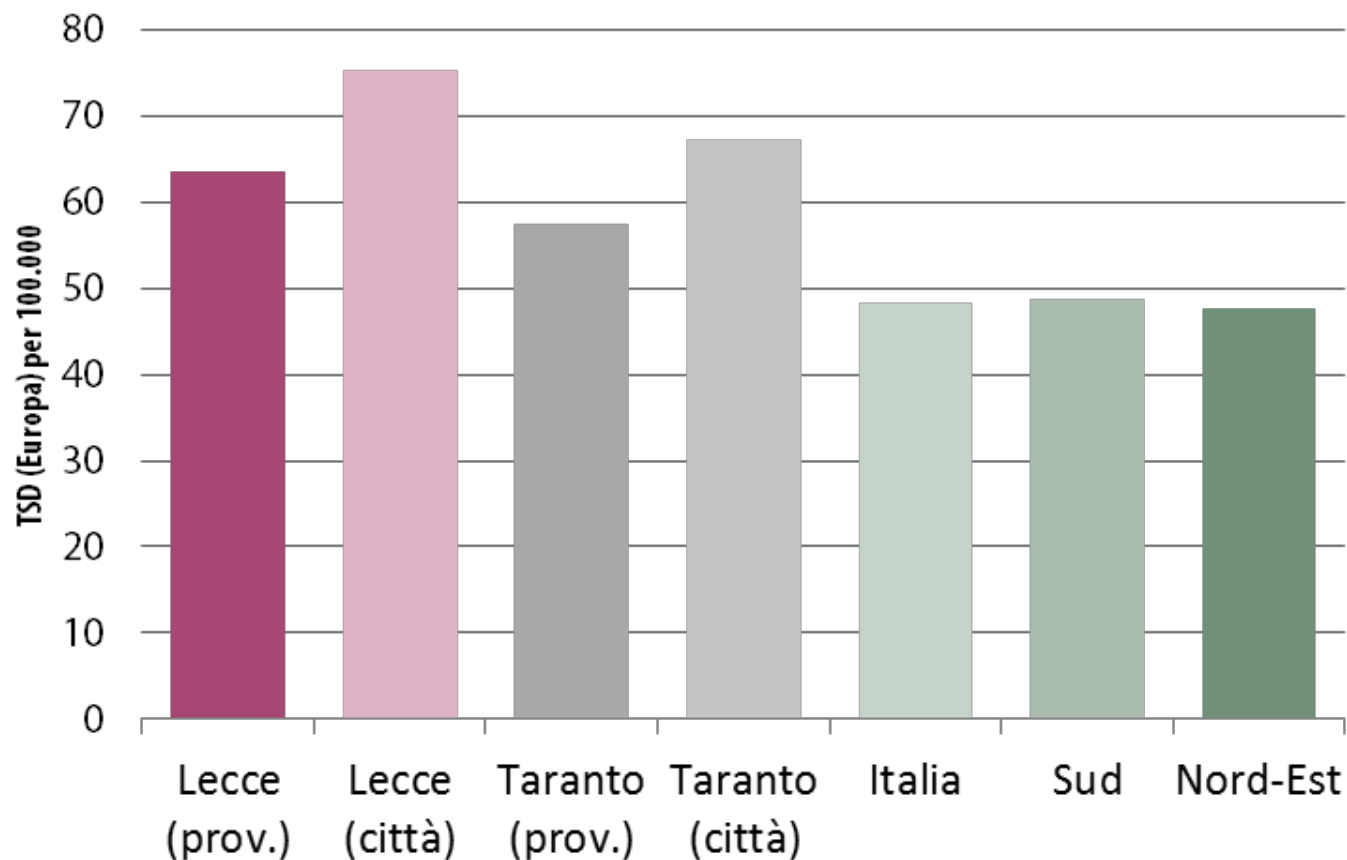


*Incidenza: +2,3% medio anno - Mortalità: +5,3% medio anno*

*RtLe Anni 2003-2008*



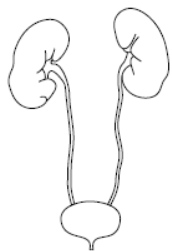
# Confronto nazionale. Maschi



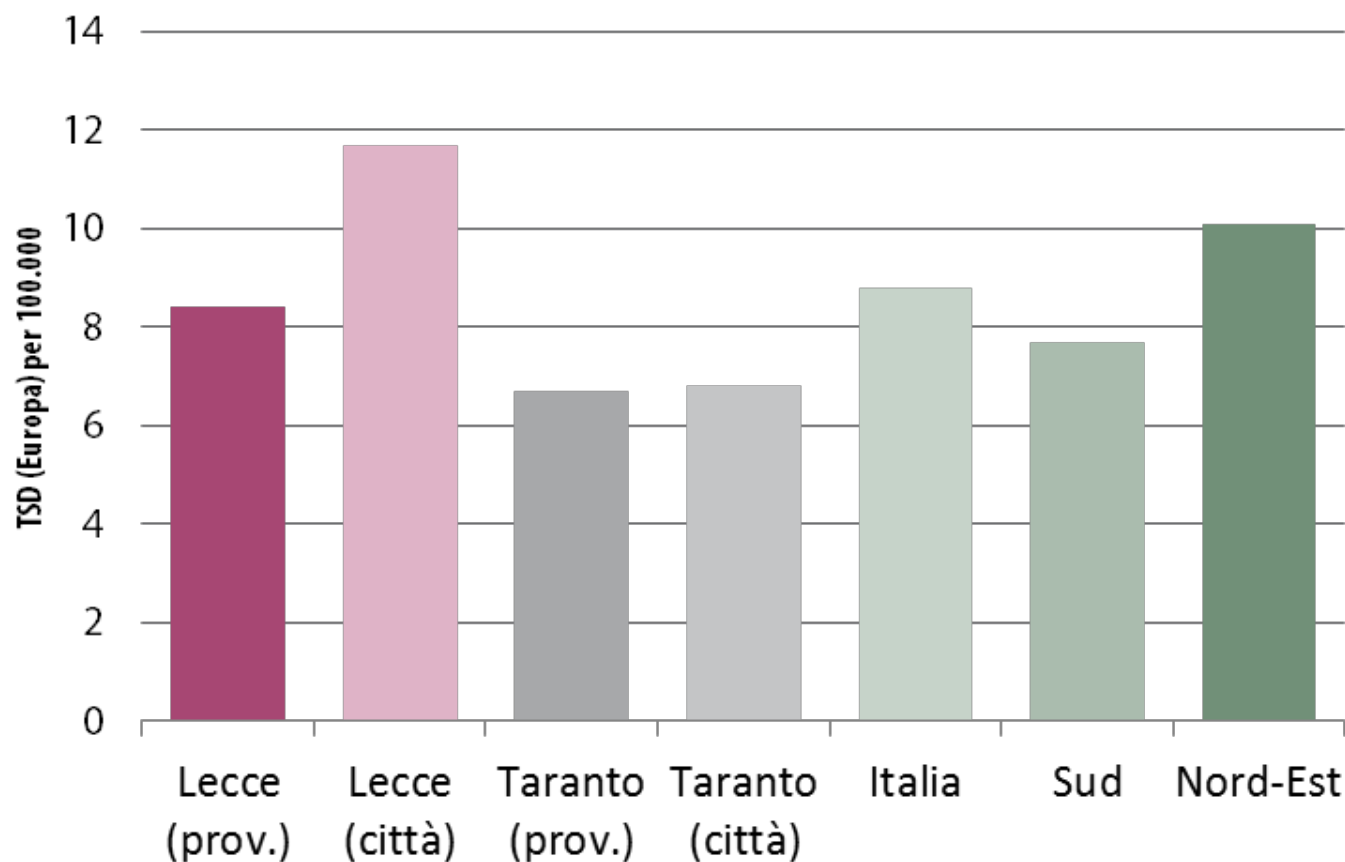
Anni 2006-2008

Fonte dati: AIRTUM



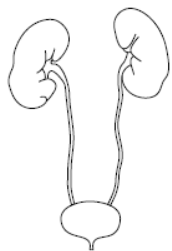


# Confronto nazionale. Femmine

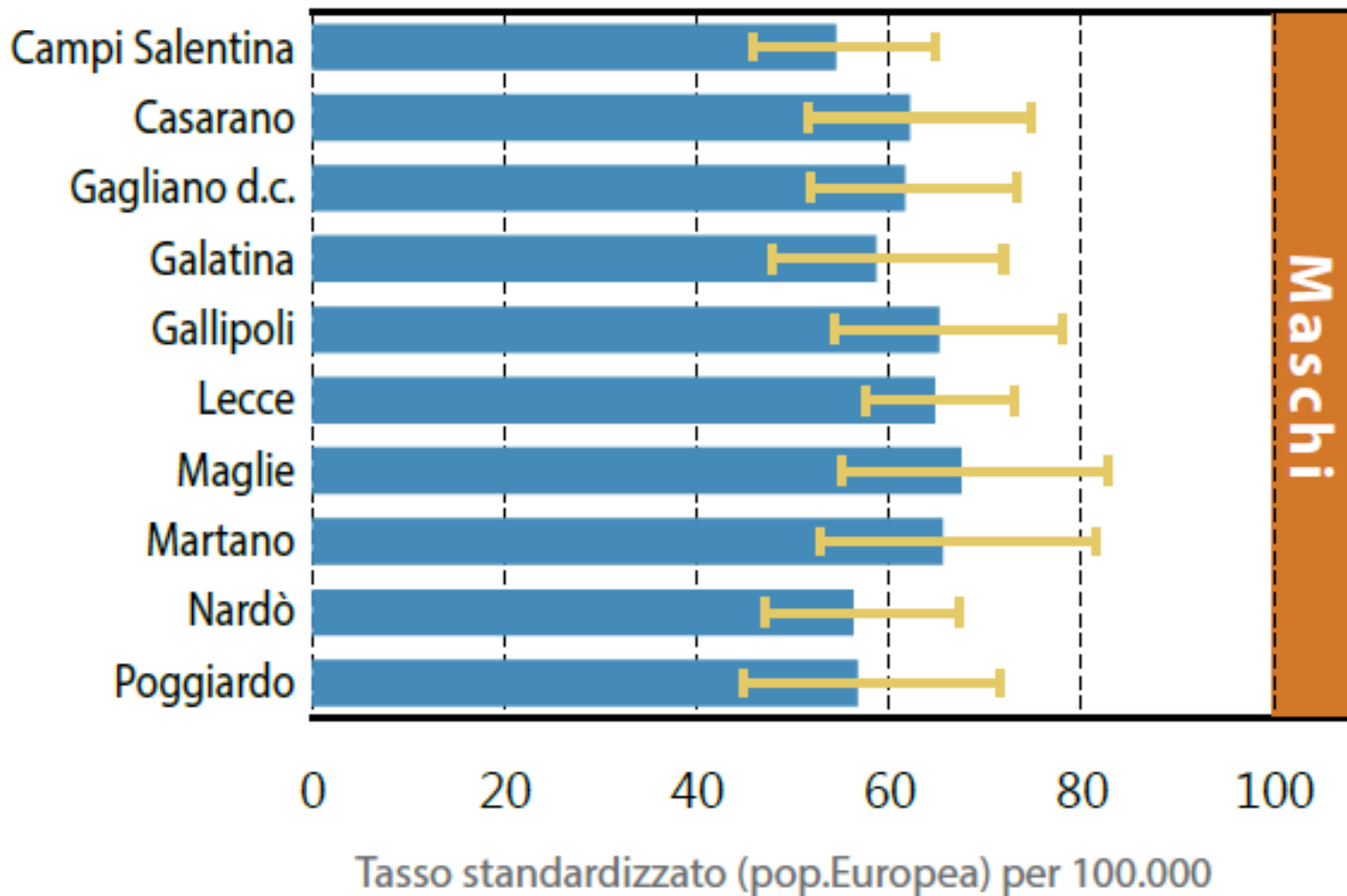


Anni 2006-2008

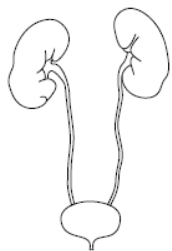
Fonte dati: AIRTUM



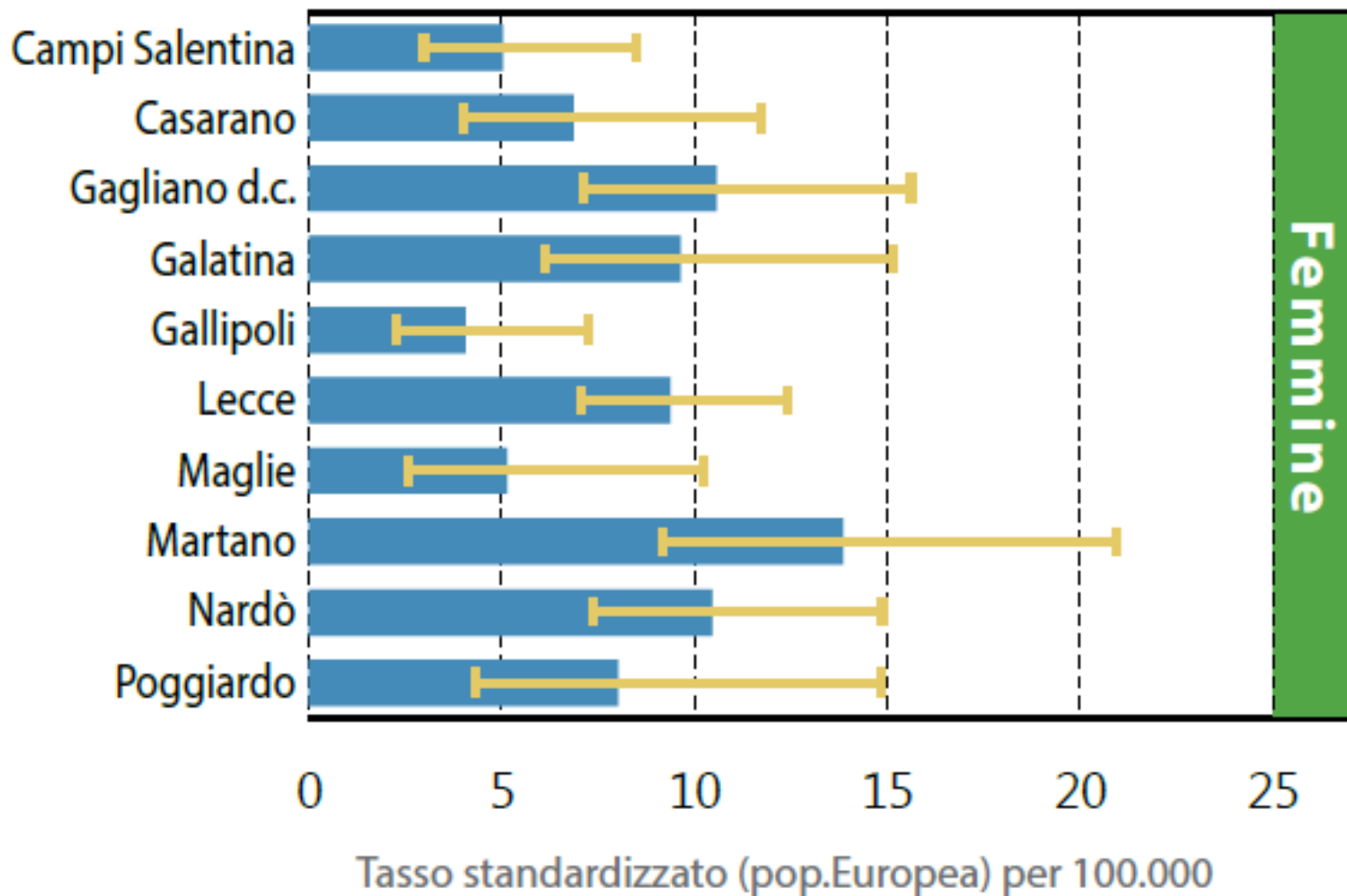
# Tassi std. di incidenza per distretto



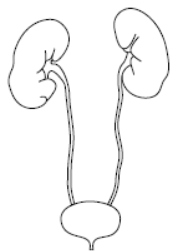
*RtLe Anni 2003-2006*



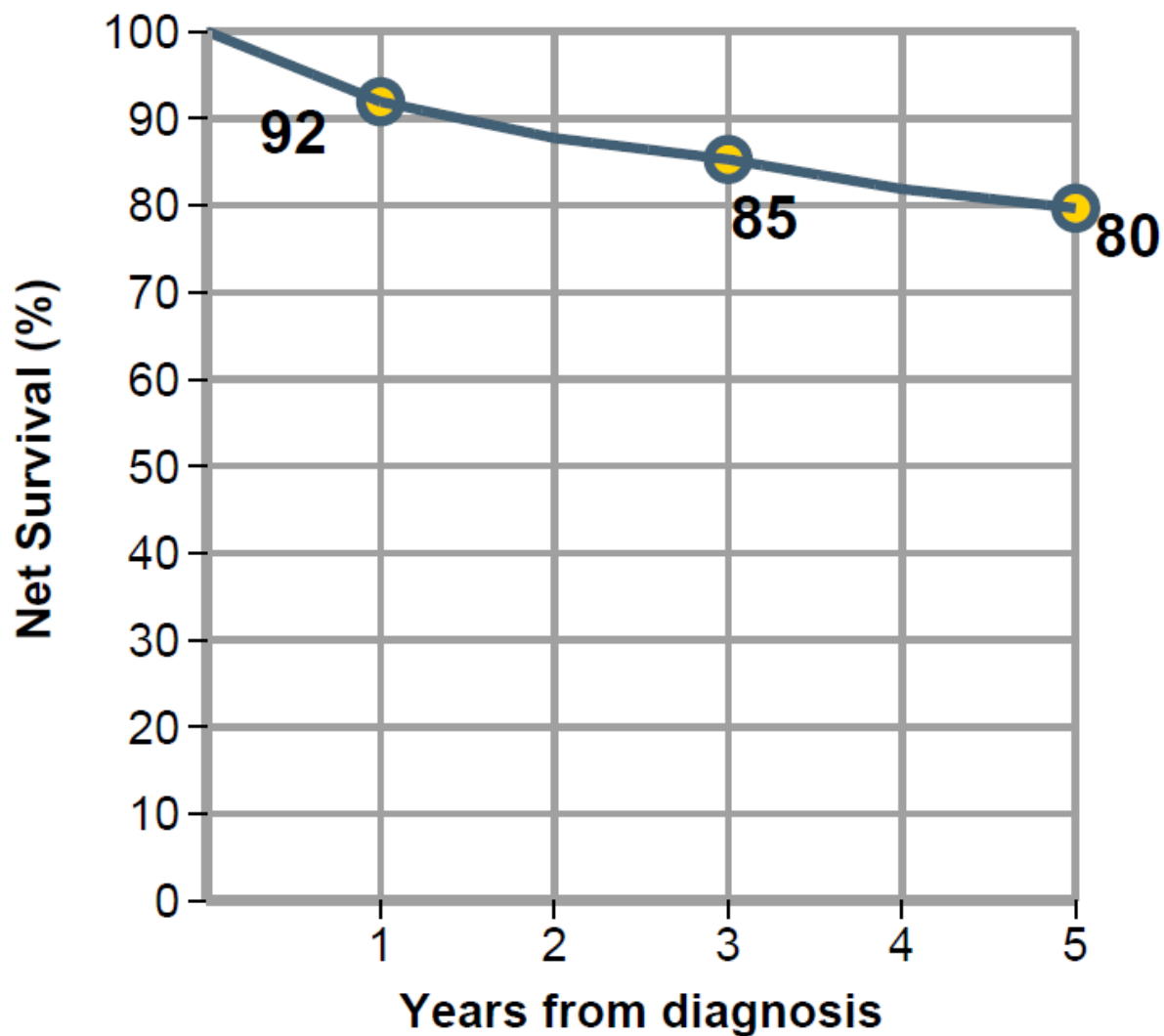
# Tassi std. di incidenza per distretto



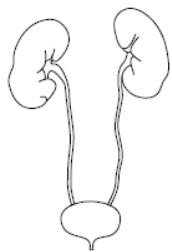
*RtLe Anni 2003-2006*



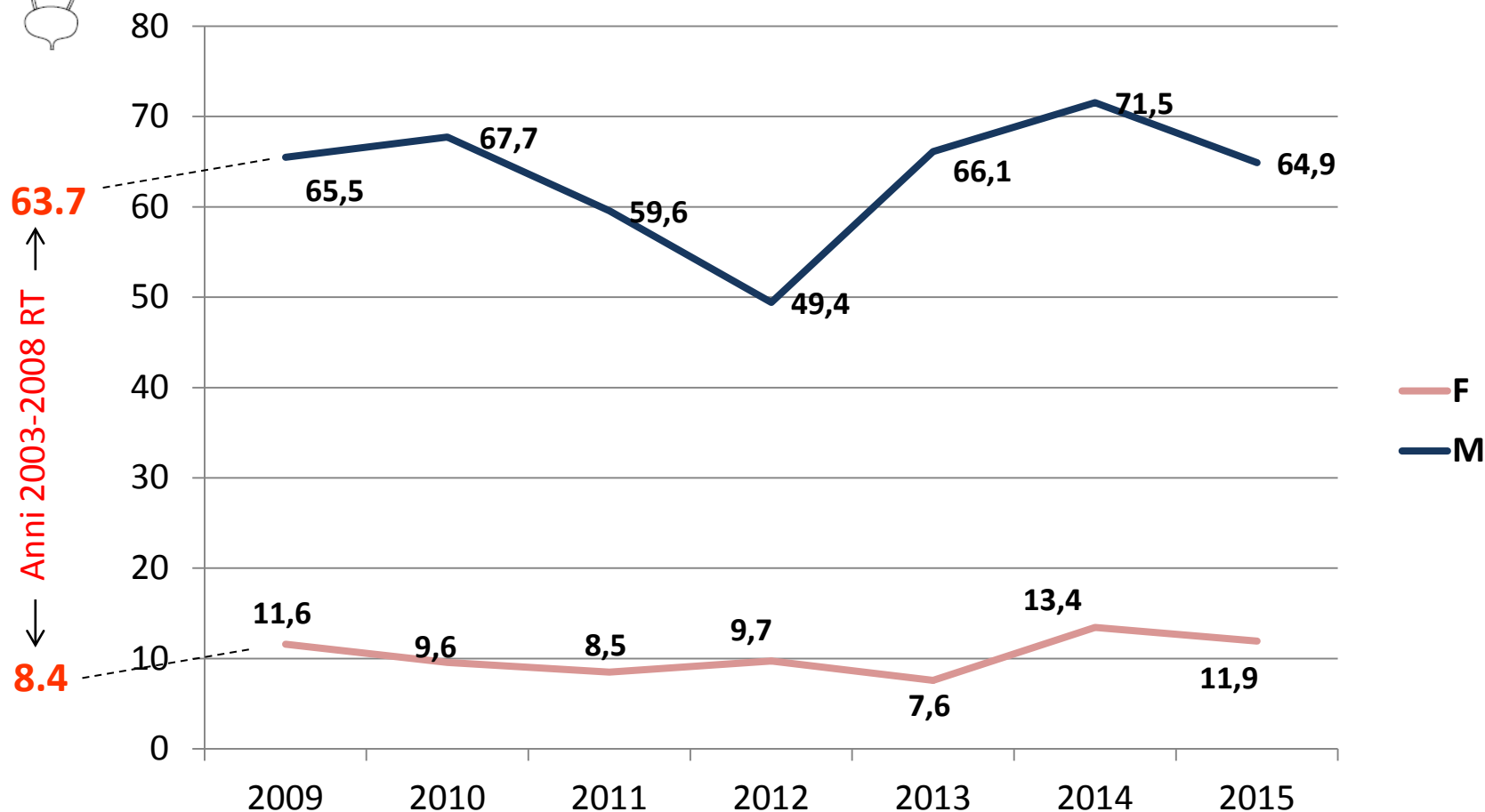
## Sopravvivenza a 5 anni



*RtLe Anni 2003-2008*



# Trend del Tasso std. Osp. T. vescica

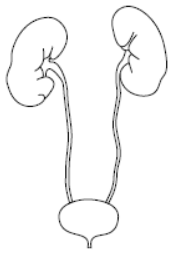


Anni 2009-2015

Fonte dati: SDO

Media annua M: 379

Media annua F: 75



## **Fattori di rischio**

**Fumo di sigaretta**

**Esposizione ad agenti occupazionali**

**Radioterapia**

**Fattori dietetici**

**Infezioni urinarie croniche**

**Chemioterapia**